

## OVERVIEW

WM-NWM is a Piston Displacement (Volumetric) water meter with mechanical transmission. It also features a liquid sealed register and is available in 20mm and 25mm with pattern approval to NMI 49-1.



WM-NWM-DC



WM-NWM-PE-DC

## CHARACTERISTICS

- Operation is volumetric piston displacement
- All components are manufactured with high resistance, quality materials, technical plastics with stainless steel parts.
- WM-NWM-PE-DC body is constructed using UV stabilized plastic polymers
- WM-NWM-DC body is constructed from DRZ brass.
- Measuring chamber design offers extreme accuracy over the entire flow range.
- The cyclometer is vacuum sealed and liquid filled.
- Dual check valves fitted to conform to AS 2845.1 and AS4020

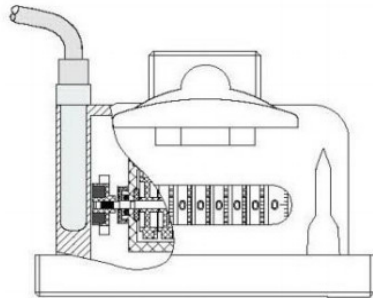
## COMPLIANCE STANDARD

- NMI R-49-1 Approval No. 14/3/22
- AS 3565.1 2010

## INSTALLATION REQUIREMENTS

- The meter can be installed in horizontal, vertical up or inclined position.
- Pipeline must be flushed before installation
- The meter should be constantly full of water during operation.

## Pulse Device



### Details of the Pulse Output Device

- ☒ Consists of plastic housing with Reed Switch, and 1.5 m cable with 2 cores in Red and Black
- ☒ Electric Data:  $V_{max}=24AC/DC$ ,  $I_{max}=0.01A$
- ☒ Capacity of the Pulse output pre-equipped -

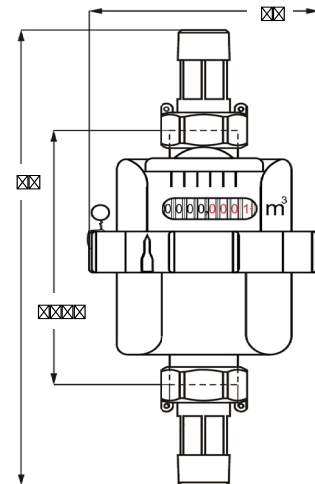
- ☐ Pulse Emitter Device
- Magnet

<b>Size</b>	<b>20mm / 25mm</b>
<b>Pulse output capacity</b>	<b>0.5 L/Pulse</b>

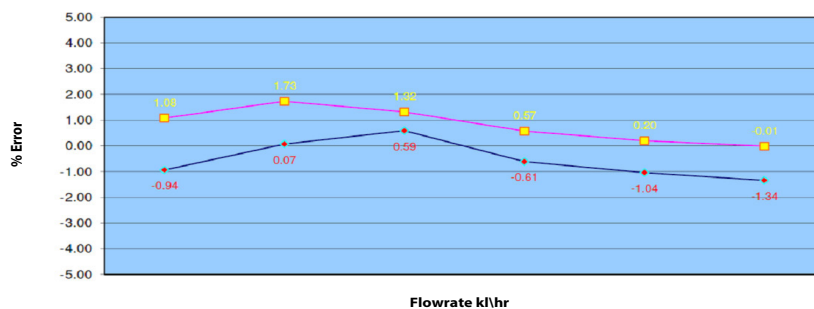
## Technical Specifications

Description	Units	Technical Data		
		Code	WM-NWM-PE-DC-20	WM-NWMC-DC-20
Product	Code	WM-NWM-PE-DC-20	WM-NWMC-DC-20	WM-NWM-DC-25
Normal Size	mm	20	20	25
Maximum flow (Q 4)	kl/h	5.0	5.0	7.8
Continuous flow Q 3) *	kl/h	4.0	4.0	6.3
Transitional flow (Q2)	l/h	32	32	40.32
Minimum flow (Q 1)	l/h	20	20	25.2
Minimum reading	l	0.00002	0.00002	0.00002
Maximum reading	m <sup>3</sup>	99999.9998	99999.9998	9999.9998
Working pressure	kpa	1400	1400	1400
Pressure loss at (Q max)	kpa	40	40	40
Overall Length (L)	mm	258	258	279
Body Length (L-1)	mm	154	154	178
Width (W)	mm	96	96	112
Temperature	°C	50°C	50°C	50°C
Weight	Kg	0.89	1.50	2.32

\* Indicates the size of the water meter based on flow rate



## Flow Rates



### Max. Permission Error (for T30)

From Q1 inclusive up to but excluding Q2 is  $\pm 5\%$

From Q2 inclusive up to and including Q4 is  $\pm 2\%$