

WMMJC - 25 to 50

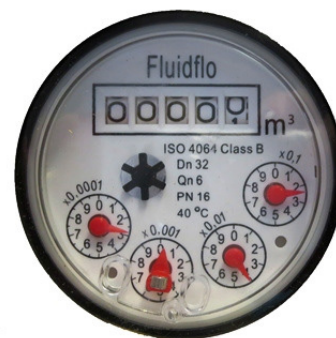
- Water meter conforms to OIML R49 Class 2, its operation is multi-jet inferential.
- Body is constructed from bronze and is baked powder coating externally.
- The cyclometer is hermetically sealed and can rotate 360°.
- Pulse value is 1 pulse = 10 litres
- Ideally suited to domestic, industrial and irrigation applications.
- Maximum working temp = 30°C Hot water version = 90°C
- Water meter supplied with couplings and washers also contains internal filter.
- Can be installed horizontally (Dial facing up) or vertically up.
- "Not intended for trade"

MODEL WMMJC-25 TO 50

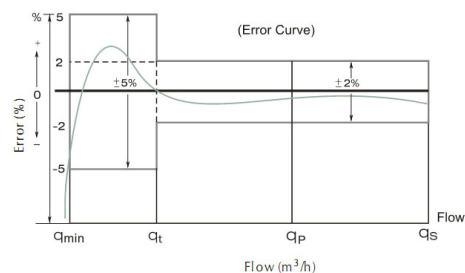


Reed Switch 24V AC/DC maximum

Description	Units	Technical Data			
		25	32	40	50
Normal Size	mm	25	32	40	50
Maximum flow (Q4)	m ³ /hr	7.0	12.0	20.0	30.0
Continuous flow (Q3) *	m ³ /hr	3.5	6.0	10.0	15.0
Transitional flow (Q2)	l/h	280	480	800	3,000
Minimum flow (Q1)	l/h	70	120	200	450
Minimum reading	l	0.05	0.05	0.05	0.05
Maximum reading	M ³	99999.9999	99999.9999	99999.9999	99999.9999
Working pressure	Mpa	1.6	1.6	1.6	1.6
Pressure loss at (Q max)	Mpa	≤0.1	≤0.1	≤0.1	≤0.1
Length (L)	mm	260	260	300	300
Width (W)	mm	94	94	138	138
Height (H)	mm	121	126	170	170
Temperature Cold	°C	30°C	30°C	30°C	30°C



Accuracy Curve



Head Loss Curve

